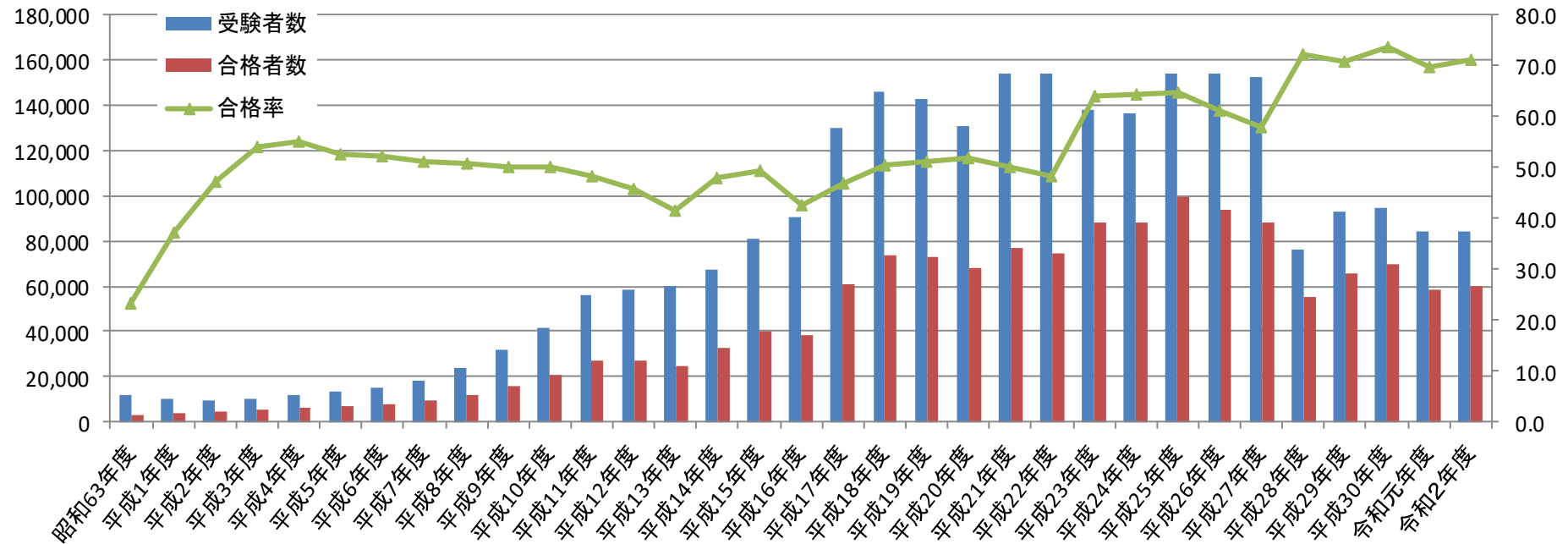


# 介護福祉士国家試験の受験者数等の推移



介護福祉士

(単位:人、%)

	S63	H1	H2	H3	H4	H5	H6	H7	H8	H9	H10	H11	H12	H13	H14	H15
受験者数	11,973	9,868	9,516	9,987	11,628	13,402	14,982	18,544	23,977	31,567	41,325	55,853	58,517	59,943	67,363	81,008
合格者数	2,782	3,664	4,498	5,379	6,402	7,041	7,845	9,450	12,163	15,819	20,758	26,973	26,862	24,845	32,319	39,938
合格率	23.2	37.1	47.3	53.9	55.1	52.5	52.4	51.0	50.7	50.1	50.2	48.3	45.9	41.4	48.0	49.3

	H16	H17	H18	H19	H20	H21	H22	H23	H24	H25	H26	H27	H28	H29	H30	R1
受験者数	90,602	130,034	145,946	142,765	130,830	153,811	154,223	137,961	136,375	154,390	153,808	152,573	76,323	92,654	94,610	84,032
合格者数	38,576	60,910	73,606	73,302	67,993	77,251	74,432	88,190	87,797	99,689	93,760	88,300	55,031	65,574	69,736	58,745
合格率	42.6	46.8	50.4	51.3	52.0	50.2	48.3	63.9	64.4	64.6	61.0	57.9	72.1	70.8	73.7	69.9

	R2
受験者数	84,483
合格者数	59,975
合格率	71.0